

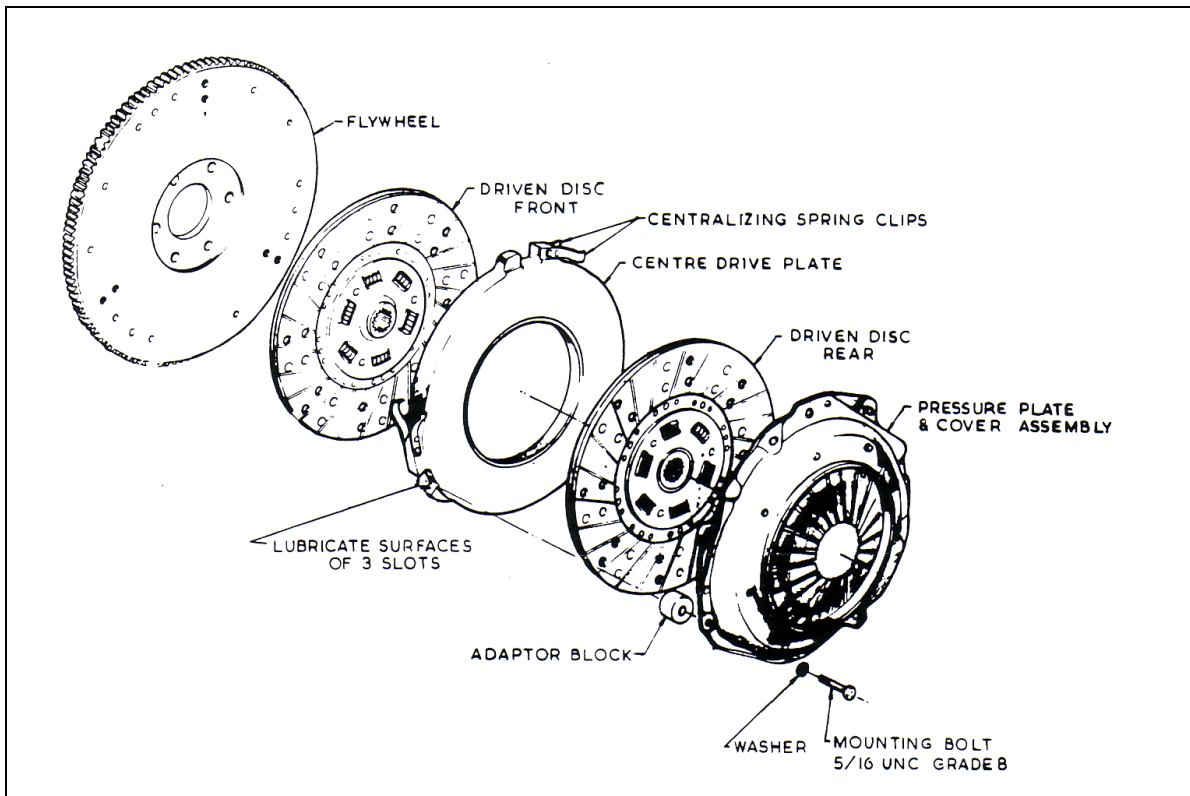
Tech Note J

Ford Twin Plate Clutch Assembly & Installation Procedure

Ref: TNJ

Issue date: 13 Dec 2004

Issue number: 2



WARNING:

The Centre Drive Plate Centralising Spring Clips are critical parts of the Twin Plate Clutch System. Each clip is precision set. If the clips are damaged, the Centre Drive Plate, Pressure Plate and Cover Assembly must be replaced as a unit.

FLYWHEEL MUST BE MACHINED

1. Position the Driven Disc (FMD 8270) with "Flywheel Side" stamp facing flywheel. (Fig 1)
2. Before installation of the Centre Drive Plate, ensure that a light film of high temperature lubricant is present on the inside surfaces of the drive slots. (See Fig.2). Locate the Centre Drive Plate over the adaptors with the Centralising Spring Clips to the right or clockwise to the adaptors (Fig. 3).

Tech Note J

Ford Twin Plate Clutch Assembly & Installation Procedure

Ref: TNJ

Issue date: 13 Dec 2004

Issue number: 2

WARNING:

Centralizing Spring Clips must not be damaged in any way or malfunction of the clutch will result.

3. Position the Driven Disc FMD 8271 with the “Pressure Plate Side” stamp facing rear of the vehicle (Fig. 3).
4. Insert Clutch Aligning Tool into Driven Discs and the Pilot Bearing. (Fig 6)
5. Line up the Balance Mark and position the Pressure Plates and Cover Assembly over the adaptors (Fig 5).
6. Tighten the Mounting Bolts evenly to 26 – 28 Nm (19 to 21 lbs/ft) torque.

Flywheel side disc
NOTE



Gearbox side disc
NOTE



Tech Note J

Ford Twin Plate Clutch Assembly & Installation Procedure

Ref: TNJ

Issue date: 13 Dec 2004

Issue number: 2



Fig.1



Fig.2

Drive slots

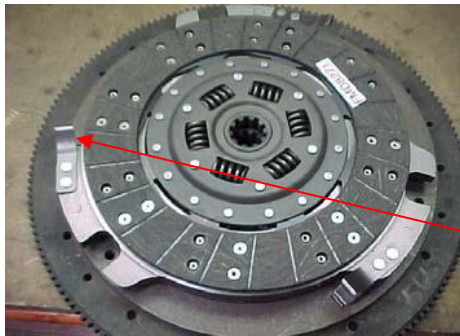


Fig.3

Centralising
spring clips to
face clockwise

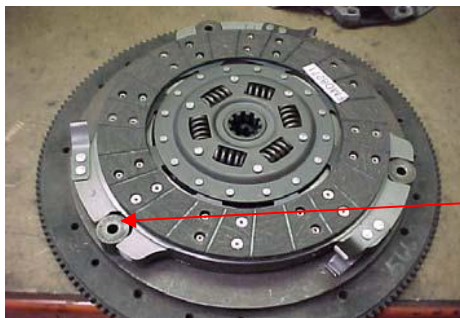


Fig.4

Centre drive
plate adaptors

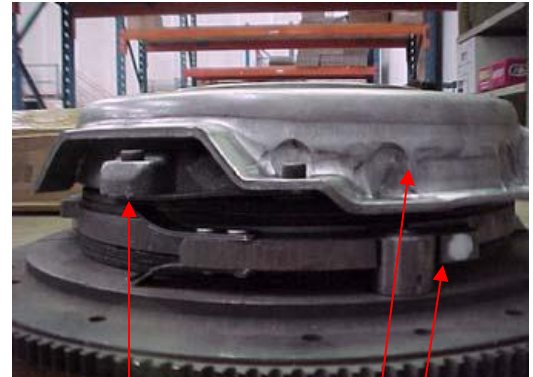


Fig.5

Note: cover
assembly rivet sits
on centralizing
spring clips

White marks
aligned

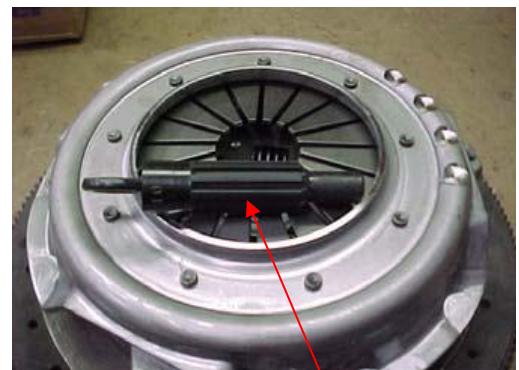


Fig.6

Old input shaft or a
splined aligning tool to
be used.

EAP part number **DCT-FC10**